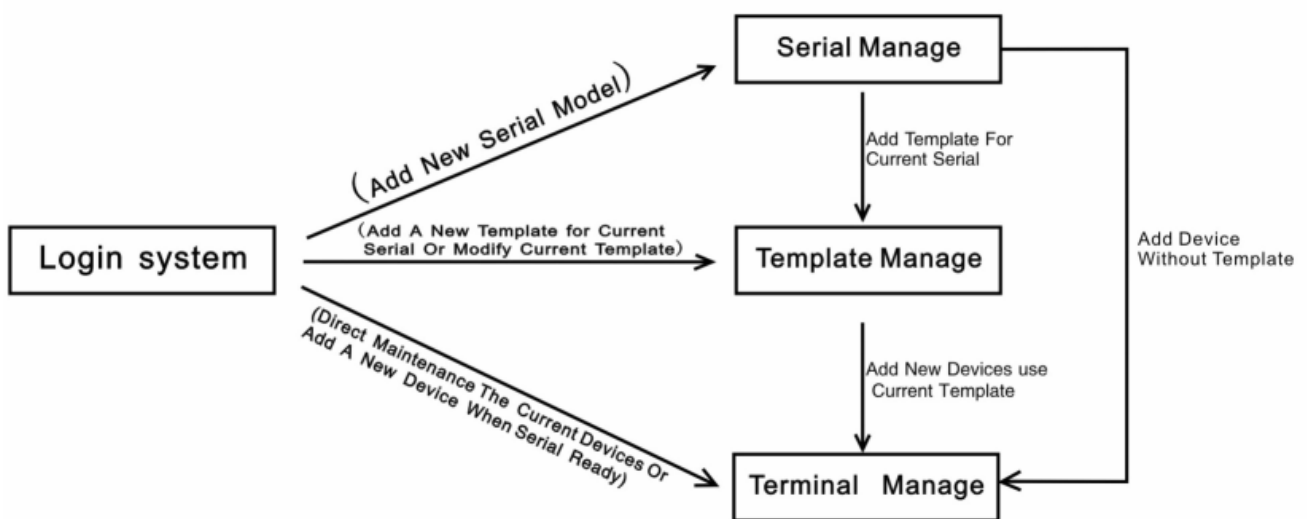


## ● Introduction

Auto\_Provision server is DBL develop for supported DBL's VoIP devices. Via this server, the administrator can maintenance all DBL terminal devices anywhere. New Auto\_Provision server has more new features:

1. New Auto\_Provision's maintenance page approximate DBL device's maintenance page.
2. New Auto\_Provision server embedded Remote Control server, the administrator can direct login to anyone connecting in this server's DBL devices anytime without the client side make NAT forward.
3. Auto\_Provision server base at WEB, the administrator can maintenance this server and the DBL devices anywhere.



## ● Server Requirement

Auto\_Provision base on LAMP (Linux Apache; MySQL; PHP), it is WEB software and it can work in Linux platform or Windows platform. We will show the install method as Linux, about Windows's install course will be ignore. Before install, you must confirm the follow module is installed in you server:

1. **Apache 2** or later; In Redhat Linux, apache changed name as **httpd**;
2. **PHP** supported;
3. **PHP\_MySQL** supported;
4. **MySQL 4** or later;

**Note:** Auto\_Provision's character as UTF-8(Chinese version) or en (for English version), if the maintenance page can't show the word when you login this system, just change the apache's default font to UTF-8 or en.

The above module inside at some Linux's installation disk, please direct choice it when you install a new server.

The above module can work in windows too. It has Windows version.

## ● Auto\_Provision Software Installation

1. Login to your server's apache installed folder, enter the follow command download the Auto\_provision software from our server:

```
wget http://118.142.51.162/update/autocfg\_en-v2.tgz
```

Note: If you use Redhat Linux platform, the apache's install folder is: /var/www/html;

2. decompression the **autocfg\_en-v2.tgz** file as follow command:

```
tar -xzf autocfg_en-v2.tgz
```

the folder will make a new folder as: **autocfg\_en**

3. Login to this new folder, enter follow command to install all database:

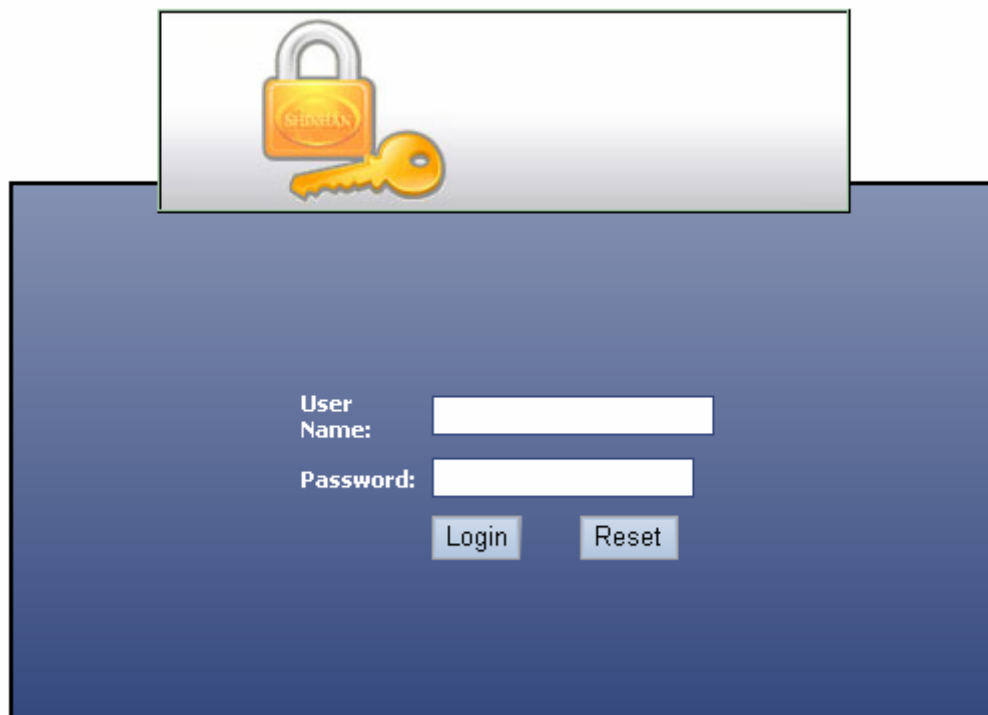
```
mysql < autocfg_en.sql
```

## ● Maintenance Auto\_Provision Server

Auto-Provision server is WEB; you can maintenance it via **IE Explorer**, enter the follow URL as your IE Explorer's address field and press enter key:

```
http://Your Server IP/autocfg_en
```

You can see the page as:



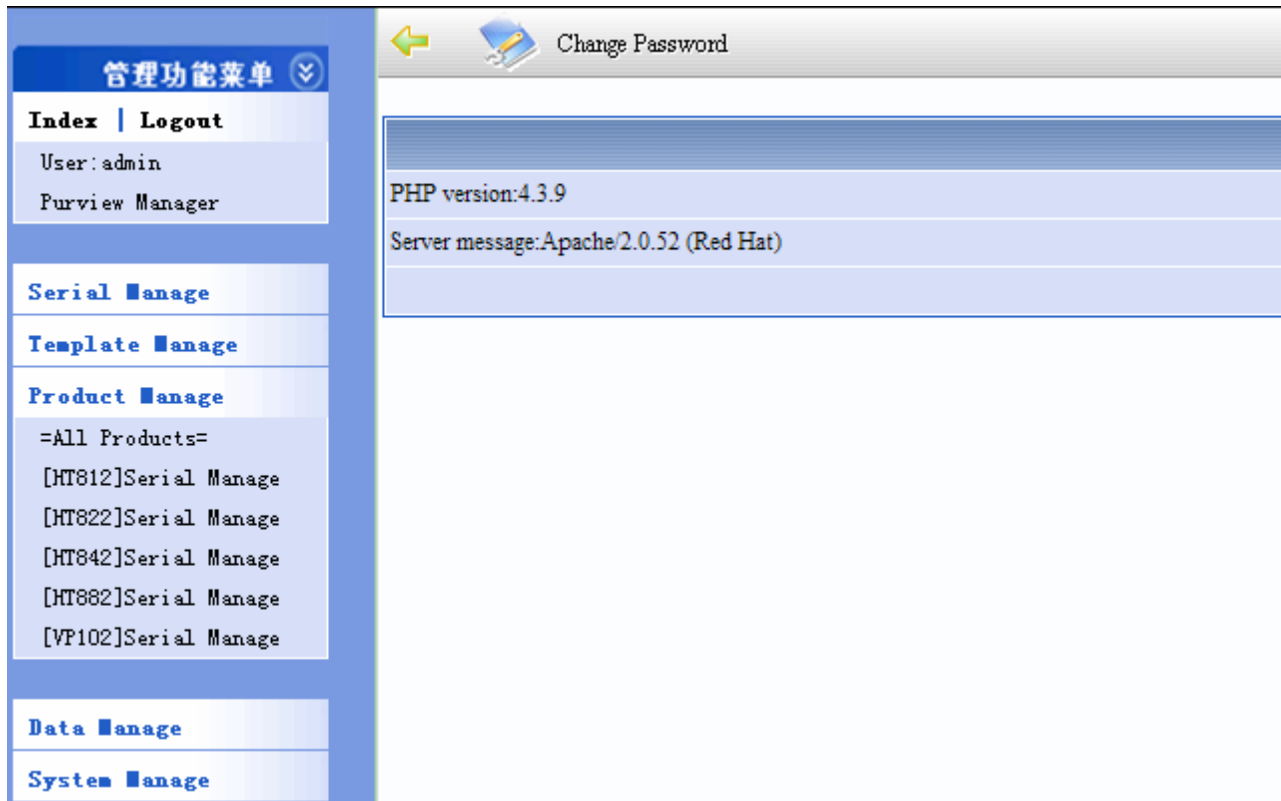
The screenshot shows a web interface for server maintenance. At the top, there is a white banner with a yellow padlock and key icon. Below this, the main content area has a blue background. It contains two text input fields: 'User Name:' and 'Password:'. Below the password field are two buttons: 'Login' and 'Reset'.

Default user name is: **admin**

Password is: **admin**

The user name and password can change after you login this system;

After the above step, you can see the page as follow, now you can use it.



### 1. Serial Manage:

Serial Manage is use to add one new serial DBL VoIP devices, the Auto\_Provision embedded some prevalent serial, if it not include your devices; please add one new serial at first.



#### Serial Add:

Add new devices the server not included;

Serial Manage	
<b>Navigation Manage:</b>	Serial Manage   Serial Add
<b>Serial Add</b>	
Serial Name:	<input type="text"/>
Serial Sort:	<input type="text" value="6"/> [Only digit]
Config File:	<input type="text"/> <input type="button" value="浏览..."/> <input type="button" value="Upload"/>
<input type="button" value="Add"/> <input type="button" value="Cancel"/>	

Serial Config file is a special file. If default install didn't have serial that you need, please

Connect us to add new serial devices when you need it.

## 2. Template Manage

Open out the Template Manage, and click the Template Add.



Open the Template Add, you can see the Template setting as like as the Terminal Use Template Manage. You can set the Terminal common setting beforehand, Like the

SIP Proxy, Relay Server, Provision Server and Remote Server settings etc.

Serial Name	HT812	Template Name	HT812
Template Sort Number	2		
<b>Call Settings</b>			
Endpoint Type	SIP Phone	Advanced Settings<<	
<b>Single Server Mode</b>		Signaling Port	5060
Phone Number		NAT Keep-alive	<input checked="" type="radio"/> Enable <input type="radio"/> Disable
Phone Number 2		P2P	<input type="radio"/> Enable <input checked="" type="radio"/> Disable
Display Name		Virtual Ringback	<input type="radio"/> Enable <input checked="" type="radio"/> Disable
SIP Proxy	192.168.1.1	Advanced Timing>>	
SIP Registrar Server		DTMF Signaling	Outband
Register Expiry(s)	60	Outband DTMF type	RFC 2833
Outbound Proxy		RTP Payload Type	101
Home Domain		Signaling QoS	None
Authentication ID		Signaling Encryption	None
Password		Signaling NAT Traversal	None
Dial Plan		Media Settings<<	
Call Forward Type	Not Forward	RTP Port Range	16384 - 32768
Call Forward Number		PacketLength(ms)	20
Backup Server	<input type="radio"/> Enable <input checked="" type="radio"/> Disable	Jitter Buffer	Fixed
Auto-provision	<input checked="" type="radio"/> Enable <input type="radio"/> Disable	Delay(ms)	60
Provision Server	http://192.168.2.2/autocfg_	Media QoS	None
Provision Interval		Media Encryption	None

Select a Serial that you want to add in the Server Name, Fill the Template Name to this Template.

**Note:** the Provision Server address format is:

**[http://your\\_server\\_ip/autocfg\\_en/index/down.php?file=](http://your_server_ip/autocfg_en/index/down.php?file=)**

Auto Provision Server only supports to configure the Call Setting by default option. If you want configure some special setting. As you want to change the Terminal's Web password. Please fill in the other settings like this.**(Match Case)**

### Other Settings (Format: option=value)

ADMIN\_PASSWROD=admin123

If you want need more special configuration, Please contact us to gain it.

Select and fill the common setting that your need. Click the Add button, Template add Complete.

Every serial has a template setting by default; you can modify the default template or delete it.

Navigation Manage: Template Manage   Template Add				
Serial Sort Number	Serial Name	Template Sort Number	Template Name	Operate
2	HT812	1	HT812	Modify   Delete
3	HT822	1	HT822	Modify   Delete
4	HT842	1	HT842	Modify   Delete
5	HT882	1	HT882	Modify   Delete
6	VP102	1	VP102	Modify   Delete

### 3. Product Manage

Open out the **Product Manage**; click the Terminal Serial to add the Terminal.



For example, i add the HT812 Serial Terminal.

Template Name	HT812	Serial Name	HT812
Serial Number(SN)	HT812P090201602	User	DBL
<b>Call Settings</b>			
Endpoint Type	SIP Phone	Advanced Settings<<	
<b>Single Server Mode</b>		Signaling Port	5060
Phone Number	101	NAT Keep-alive	<input checked="" type="radio"/> Enable <input type="radio"/> Disable
Phone Number 2		P2P	<input type="radio"/> Enable <input checked="" type="radio"/> Disable
Display Name		Virtual Ringback	<input type="radio"/> Enable <input checked="" type="radio"/> Disable
SIP Proxy	192.168.2.1	Advanced Timing>>	

Serial Number (SN) is the Terminal's only identification. Used to identify the one and only setting for the Terminal. You can find the Terminal SN in the Status Web Page or find it in the terminal label.

**Note.** If you fill the wrong SN, the terminal will not get the auto provision.

User is used to remember customer how use the Terminal. And other settings is as like as the terminal settings.

Click the add button, Product add complete.

**Terminal Bath add** allow you to add more sequence terminal at a time.

Current position:HT812Model-->Terminal Batch Add

Template Name	HT812	Serial Name	HT812
SN(Input the start and end SN)	HT001	10	USER DBL
<b>Call Settings</b>			
Endpoint Type	SIP Phone	Advanced Settings<<	
<b>Single Server Mode</b>		Signaling Port	5060
Phone Number	101	NAT Keep-alive	<input checked="" type="radio"/> Enable <input type="radio"/> Disable
Phone Number 2		P2P	<input type="radio"/> Enable <input checked="" type="radio"/> Disable
Display Name		Virtual Ringback	<input type="radio"/> Enable <input checked="" type="radio"/> Disable
SIP Proxy		Advanced Timing>>	

For example, you want to add the SN **HT001** to SN **HT010**, 10 sequence terminal. You can fill SN number as HT010 – 10, that can add 10 sequence terminal.

**Product Manage** you can modify and delete the terminal what you are already add.

Current Position:HT812Serial Manage												
Choice	SN	USER	CLASS	ENDPOINT	CONFIG_MODE	SIP_SERVER	SIP_ID	H323_GK	H323_ID	RELAY_SERVER	UPDATE_TIME	OPERATION
<input type="checkbox"/>	HT001	DBL	HT812	SIP	SINGLE_MODE	192.168.2.1					2009-03-18 16:58:47	Modify   Delete
<input type="checkbox"/>	HT002	DBL	HT812	SIP	SINGLE_MODE	192.168.2.1					2009-03-18 16:58:47	Modify   Delete
<input type="checkbox"/>	HT003	DBL	HT812	SIP	SINGLE_MODE	192.168.2.1					2009-03-18 16:58:47	Modify   Delete
<input type="checkbox"/>	HT004	DBL	HT812	SIP	SINGLE_MODE	192.168.2.1					2009-03-18 16:58:47	Modify   Delete
<input type="checkbox"/>	HT005	DBL	HT812	SIP	SINGLE_MODE	192.168.2.1					2009-03-18 16:58:47	Modify   Delete
<input type="checkbox"/>	HT006	DBL	HT812	SIP	SINGLE_MODE	192.168.2.1					2009-03-18 16:58:47	Modify   Delete
<input type="checkbox"/>	HT007	DBL	HT812	SIP	SINGLE_MODE	192.168.2.1					2009-03-18 16:58:47	Modify   Delete
<input type="checkbox"/>	HT008	DBL	HT812	SIP	SINGLE_MODE	192.168.2.1					2009-03-18 16:58:47	Modify   Delete
<input type="checkbox"/>	HT009	DBL	HT812	SIP	SINGLE_MODE	192.168.2.1					2009-03-18 16:58:47	Modify   Delete
<input type="checkbox"/>	HT010	DBL	HT812	SIP	SINGLE_MODE	192.168.2.1					2009-03-18 16:58:47	Modify   Delete

Choice current page

**Terminal Search And Batch Modify**, you can search the terminal with some condition like SN, SIP Server and Relay Server etc. And modify the terminal that you searched.

Search Field			
<b>Serial Name:</b> HT8122			
<b>SN:</b>	<input type="text"/>	<input type="button" value="Search"/>	<b>USER:</b>
<b>SIP Server:</b>	<input type="text"/>	<input type="button" value="Search"/>	<b>SIP ID:</b>
<b>H323 GK:</b>	<input type="text"/>	<input type="button" value="Search"/>	<b>H323 ID:</b>
<b>Number</b>	<input type="text"/>	<input type="button" value="Search"/>	<b>Relay Server:</b>
			<input type="text"/>
			<input type="button" value="Search"/>

Chose the search result terminals, you can modify some common settings for the terminals.

**Batch Modify Setting**

Products Conversion

SIP Server:  SIP Proxy:

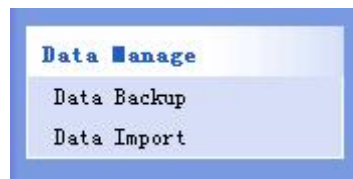
AUTO\_CONFIG Server:  Remote Control Server:

Dial Plan:

Modification of the selected products

#### 4. Data Manage

**Data Manage**, allow you backup and restore your auto provision data in your server.



- Data Backup**, you can select **Backup all data** to backup all auto provision data, or choose **Leaflets Sheet Data Backup** to backup one serial terminal data. **Choice of target locations** can choose the backup data where to save. Backup to server or backup to your local PC.

**Data Backup**

Backup mode

Backup all data Backup all data to a backup data sheet paper

Leaflets Sheet Data Backup Please choose Backup selected data to a separate data sheet paper backup

Separating the use of backup

Volume backup  K

Choice of target locations

Backup to serve  Backup local

Backup

- Data Import**, Import the provision data that you have backup from you auto provision server or you local PC.

Data Recovery	
Backup mode	
<input checked="" type="radio"/> Resumption of documents from the server	-Please choose- ▾
<input type="radio"/> Resume from the local paper	<input type="text"/> 浏览...
Recovery	

## 5. System Manage.

Change web administrator password and configure Remote Control web port.

System Manage
User Manage
Remote-Server parameters
This Manage

**User Manage.** You can change the Auto Provision administrator password.

User's Password Modify	
User Name:	admin
New Password:	<input type="text"/>
Validate:	<input type="text"/>
<input type="button" value="Modify"/> <input type="button" value="Cancel"/>	

**Remote Control Parameter.** If you install Remote Control Server, you can fill the Remote Control Server web port. With this web port that Auto Provision can remote access the terminal web page and that needn't to login Remote Control Server.

Remote server's parameters	
Web Port:	<input type="text" value="8086"/>
<input type="button" value="Save"/> <input type="button" value="Cancel"/>	

Back to the **Product Manage**, select a terminal that you have already added. Click Modify. You will see the **Remote to http settings**, click it can remote access to the terminal. (Need your terminal have already connect to your Remote Control Server)

Current position: {Model-->Terminal Modify		Remote to http settings	
Updatetime	2009-03-18 16:58:47	Serial Name	HT812
Serial Number(SN)	<input type="text" value="HT001"/>	User	<input type="text" value="DBL"/>
Call Settings			
Endpoint Type	<input type="text" value="SIP Phone"/> <input type="button" value="v"/>	Advanced Settings<<	
Single Server Mode	Signaling Port	<input type="text" value="5060"/>	

Remote access to the terminal's web page, make sure you have configure the Remote Control settings.

RemoteControl<<	
Remote Server	<input type="text" value="192.168.2.2"/>
Remote Server Port	<input type="text" value="1920"/>
Remote Server ID	<input type="text" value="{SN}"/>
Remote Server Key	<input type="text"/>

**Remote Server:** Fill the Remote Control Server IP address you have input.

**Remote Server Port:** Fill the Remote Control access port.

**Note.** This port is terminal connect to Remote Control Server's port, not the Remote Control web port.

**Remote Server ID:** Auto Provision use the terminal **SN** connects to the Remote Terminal. Please keep the value  $\$(SN)$ .  $\$(SN)$  equal the terminal's SN.

**Remote Server Key:** If the Remote Server set the Remote Server key. Terminal need set the same that terminal can connect to Remote Server.

And more detail about Remote Control Server, please see the Remote Control Server document.

Auto Provision setting complete.

- **Terminal Setting:**

Finish the Auto Provision setting; now configure your terminal to fetch the configurations from Auto Provision Server.

Open your browser and login the terminal web **configure page**. Enable your terminal Auto provision and configure the Provision Server.

<b>Auto-provision</b>	<input checked="" type="radio"/> Enable <input type="radio"/> Disable
<b>Provision Server</b>	<input type="text" value="http://192.168.2.2/autocfg"/>
<b>Provision Interval</b>	<input type="text"/>

**Provision Server:** Fill the Auto provision URL.

**Note:** The Provision Server URL format is:

**[http://Provision\\_Server\\_IP/autocfg\\_en/index/down.php?file=](http://Provision_Server_IP/autocfg_en/index/down.php?file=)**

Use your Provision Server IP instead of **Provision\_Server\_IP**. If you fill the wrong URL format. Terminal can't get the Provision configure.

**Provision Interval:** Units is second. If you want to auto provision per out, fill 3600. Or Keep it empty that auto provision when the terminal at the boot time.

Save the terminal configuration, and reboot it. Terminal will fetch the provision configuration at the boot time.